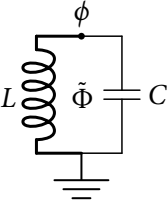
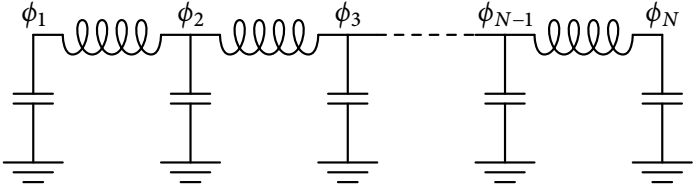
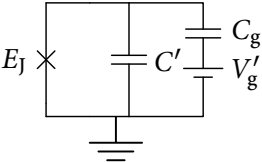
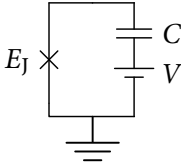
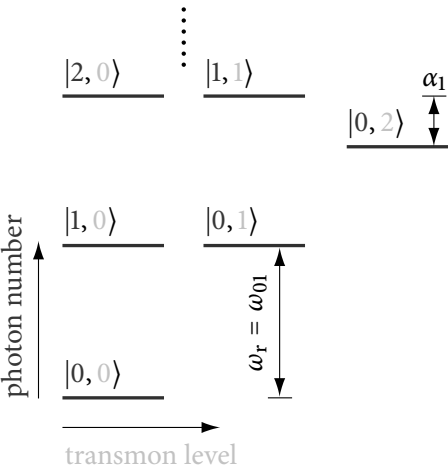
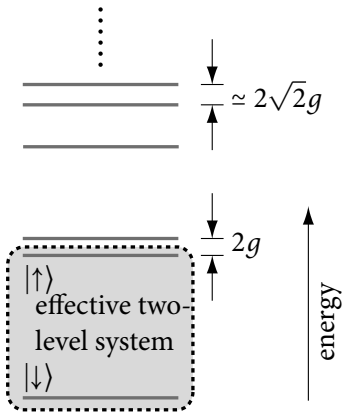


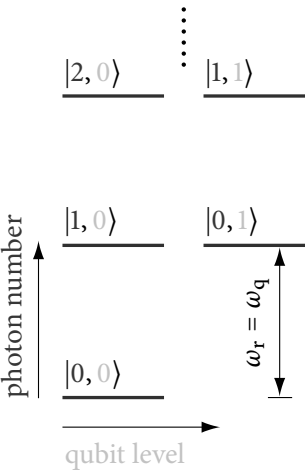
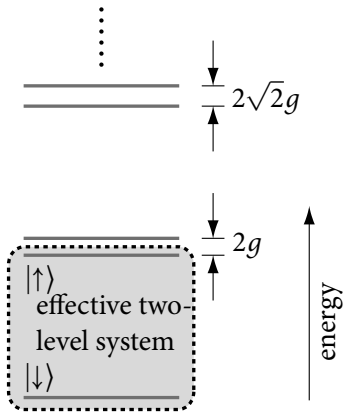
Name	Rev	Author	Time
Document	472	lsb	2010-06-19 16:31:34
File ‘merged.tex’	472	lsb	2010-06-19 16:31:34
Group ‘pgf’	432	lsb	2010-02-02 00:49:53
File ‘raw/pgfdispersion.tex’	405	lsb	2010-01-11 16:10:05
File ‘raw/pgfwavefunctions.tex’	405	lsb	2010-01-11 16:10:05
File ‘raw/pgfdispersionng.tex’	432	lsb	2010-02-02 00:49:53
Group ‘eps’	432	lsb	2010-02-02 00:49:53
File ‘raw/LC.eps’	358	lsb	2009-10-20 13:16:09
File ‘raw/transline.eps’	358	lsb	2009-10-20 13:16:09
File ‘raw/cpb.eps’	358	lsb	2009-10-20 13:16:09
File ‘raw/extjc.eps’	358	lsb	2009-10-20 13:16:09
File ‘raw/jc.eps’	358	lsb	2009-10-20 13:16:09
File ‘raw/supersplit.eps’	358	lsb	2009-10-20 13:16:09
File ‘raw/butterfly.eps’	358	lsb	2009-10-20 13:16:09
File ‘raw/wolverine.eps’	358	lsb	2009-10-20 13:16:09
File ‘raw/blochospheretoymodel.eps’	358	lsb	2009-10-20 13:16:09
File ‘raw/linecuts4pan.eps’	358	lsb	2009-10-20 13:16:09
File ‘raw/hetvsphtcnt.eps’	358	lsb	2009-10-20 13:16:09
File ‘raw/quadratures.eps’	358	lsb	2009-10-20 13:16:09
File ‘raw/quadratureshippower.eps’	358	lsb	2009-10-20 13:16:09
File ‘raw/lnrvsnonlnr.eps’	358	lsb	2009-10-20 13:16:09
File ‘raw/expsschematic.eps’	358	lsb	2009-10-20 13:16:09
File ‘raw/expsample.eps’	358	lsb	2009-10-20 13:16:09
File ‘raw/expvrabimap.eps’	358	lsb	2009-10-20 13:16:09
File ‘raw/ghz0.eps’	358	lsb	2009-10-20 13:16:09
File ‘raw/ghz1.eps’	358	lsb	2009-10-20 13:16:09
File ‘raw/ghz2.eps’	432	lsb	2010-02-02 00:49:53
File ‘raw/ghz3.eps’	358	lsb	2009-10-20 13:16:09
File ‘raw/ghz4.eps’	358	lsb	2009-10-20 13:16:09
File ‘raw/ghz5.eps’	358	lsb	2009-10-20 13:16:09
File ‘raw/tiecirct.eps’	358	lsb	2009-10-20 13:16:09
File ‘raw/mmpurcell.eps’	358	lsb	2009-10-20 13:16:09
File ‘raw/transcouple.eps’	358	lsb	2009-10-20 13:16:09
File ‘raw/transintransline.eps’	358	lsb	2009-10-20 13:16:09
File ‘raw/nodissip.eps’	358	lsb	2009-10-20 13:16:09
File ‘raw/thermal.eps’	358	lsb	2009-10-20 13:16:09
File ‘raw/rau.eps’	358	lsb	2009-10-20 13:16:09
Group ‘pfrag’	395	lsb	2009-12-02 18:58:45
File ‘raw/figLC.tex’	358	lsb	2009-10-20 13:16:09
File ‘raw/figtransline.tex’	358	lsb	2009-10-20 13:16:09
File ‘raw/figcpb.tex’	358	lsb	2009-10-20 13:16:09
File ‘raw/figextjc.tex’	358	lsb	2009-10-20 13:16:09
File ‘raw/figjc.tex’	358	lsb	2009-10-20 13:16:09
File ‘raw/figsupersplit.tex’	358	lsb	2009-10-20 13:16:09
File ‘raw/figbutterfly.tex’	358	lsb	2009-10-20 13:16:09
File ‘raw/figwolverine.tex’	358	lsb	2009-10-20 13:16:09
File ‘raw/figblochospheretoymodel.tex’	358	lsb	2009-10-20 13:16:09
File ‘raw/figlinecuts4pan.tex’	358	lsb	2009-10-20 13:16:09
File ‘raw/fighetvsphtcnt.tex’	358	lsb	2009-10-20 13:16:09
File ‘raw/figquadratures.tex’	358	lsb	2009-10-20 13:16:09
File ‘raw/figquadratureshippower.tex’	358	lsb	2009-10-20 13:16:09
File ‘raw/figlnrvsnonlnr.tex’	358	lsb	2009-10-20 13:16:09
File ‘raw/figexpsschematic.tex’	358	lsb	2009-10-20 13:16:09
File ‘raw/figexpsample.tex’	358	lsb	2009-10-20 13:16:09
File ‘raw/figexpvrabimap.tex’	358	lsb	2009-10-20 13:16:09
File ‘raw/figghz0.tex’	358	lsb	2009-10-20 13:16:09
File ‘raw/figghz1.tex’	358	lsb	2009-10-20 13:16:09
File ‘raw/figghz2.tex’	358	lsb	2009-10-20 13:16:09
File ‘raw/figghz3.tex’	358	lsb	2009-10-20 13:16:09
File ‘raw/figghz4.tex’	358	lsb	2009-10-20 13:16:09
File ‘raw/figghz5.tex’	358	lsb	2009-10-20 13:16:09
File ‘raw/figtiecirct.tex’	358	lsb	2009-10-20 13:16:09
File ‘raw/figmmpurcell.tex’	358	lsb	2009-10-20 13:16:09
File ‘raw/figtranscouple.tex’	358	lsb	2009-10-20 13:16:09
File ‘raw/figtransintransline.tex’	358	lsb	2009-10-20 13:16:09
File ‘raw/fignodissip.tex’	358	lsb	2009-10-20 13:16:09
File ‘raw/figthermal.tex’	358	lsb	2009-10-20 13:16:09
File ‘raw/figrau.tex’	395	lsb	2009-12-02 18:58:45

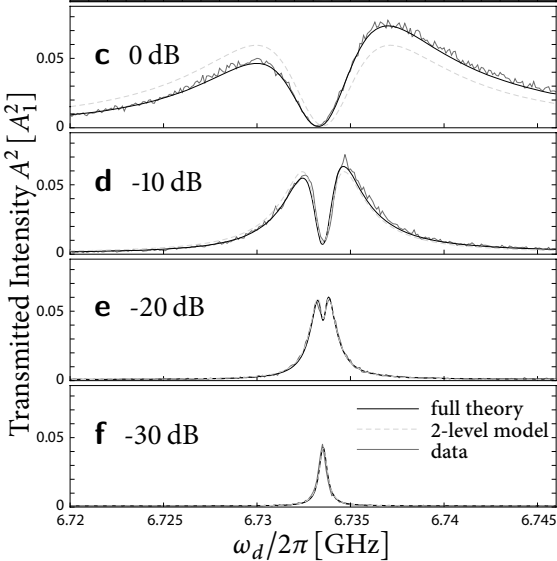
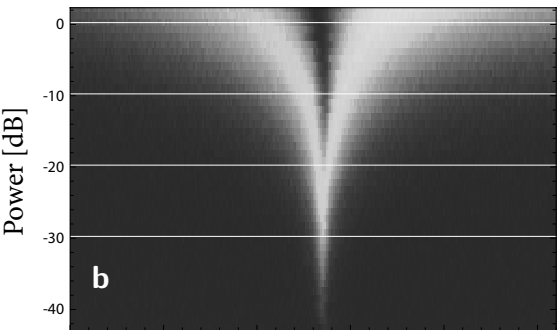
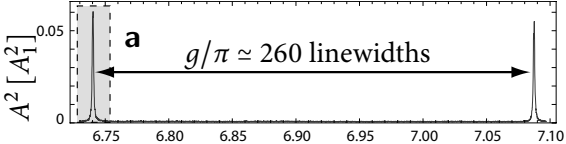


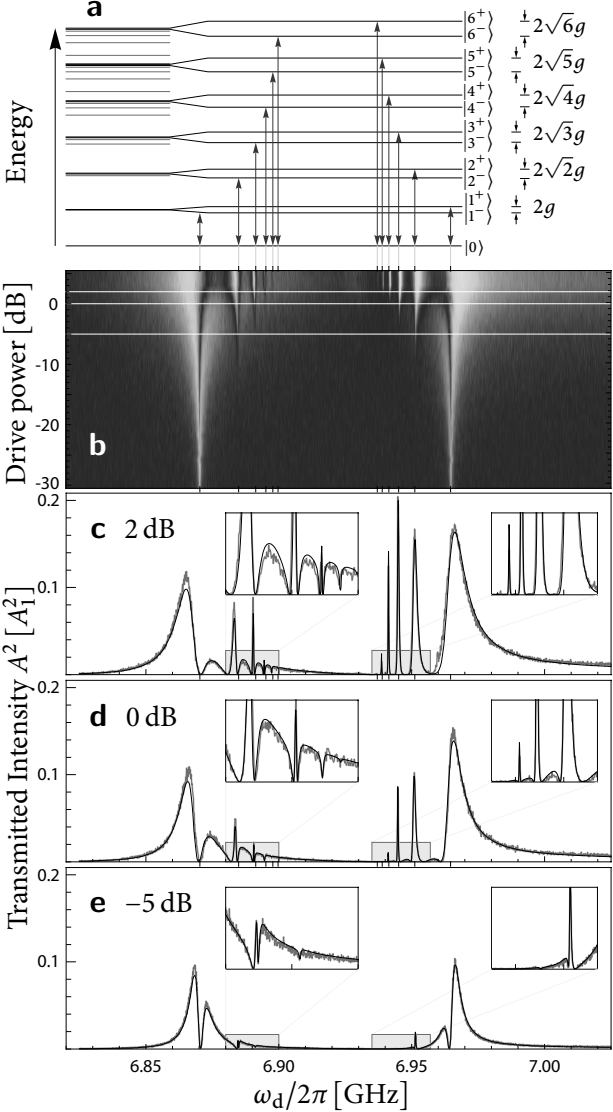


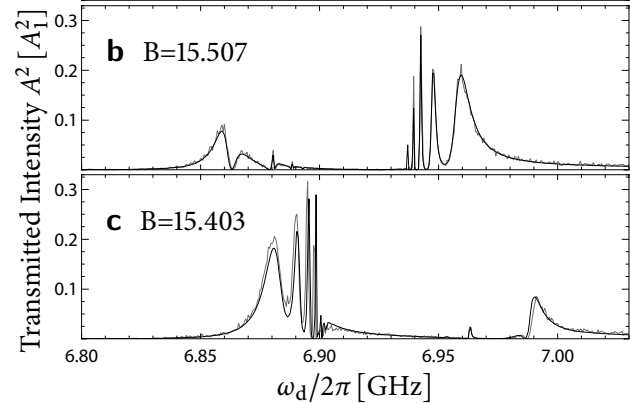
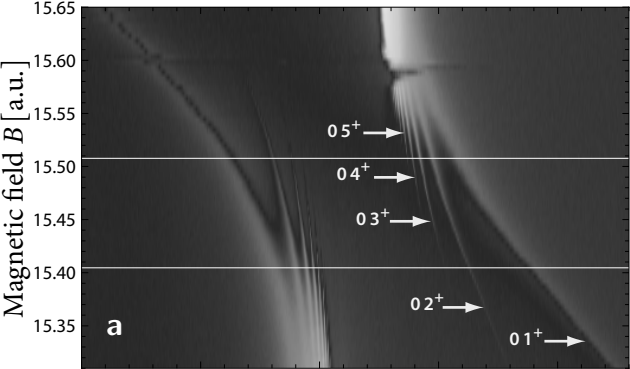
a**b**

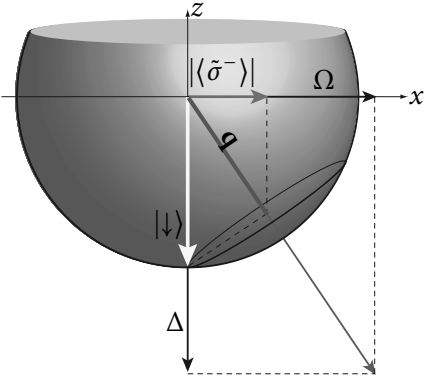
a**b**

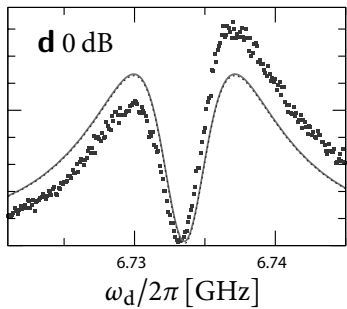
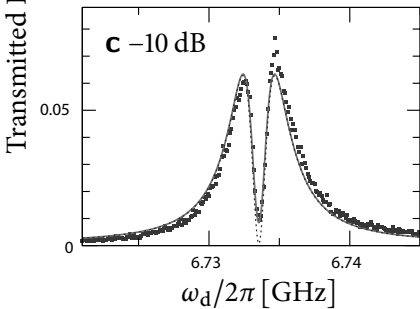
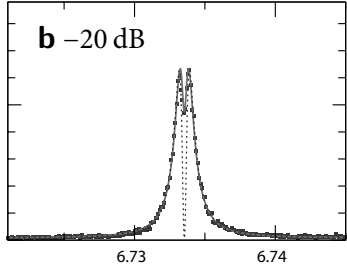
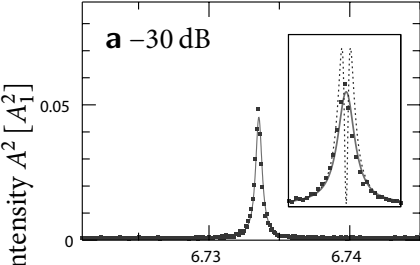
a**b**

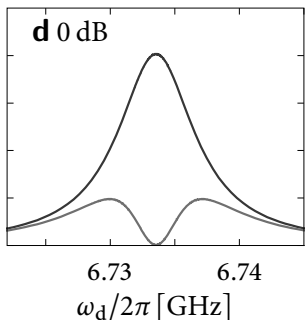
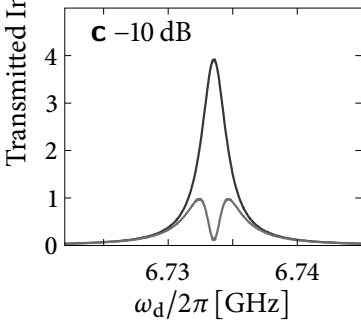
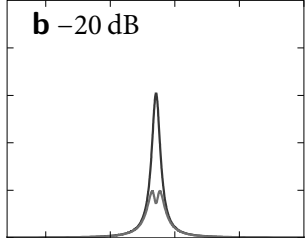
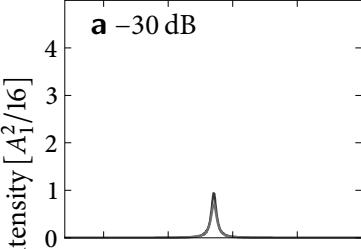


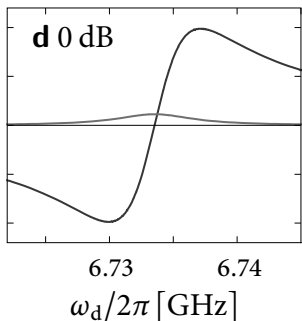
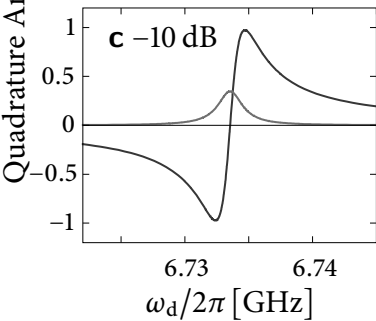
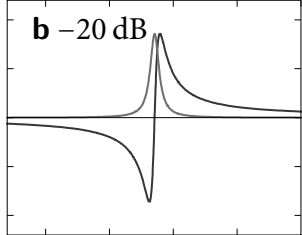
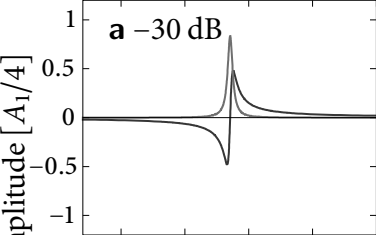


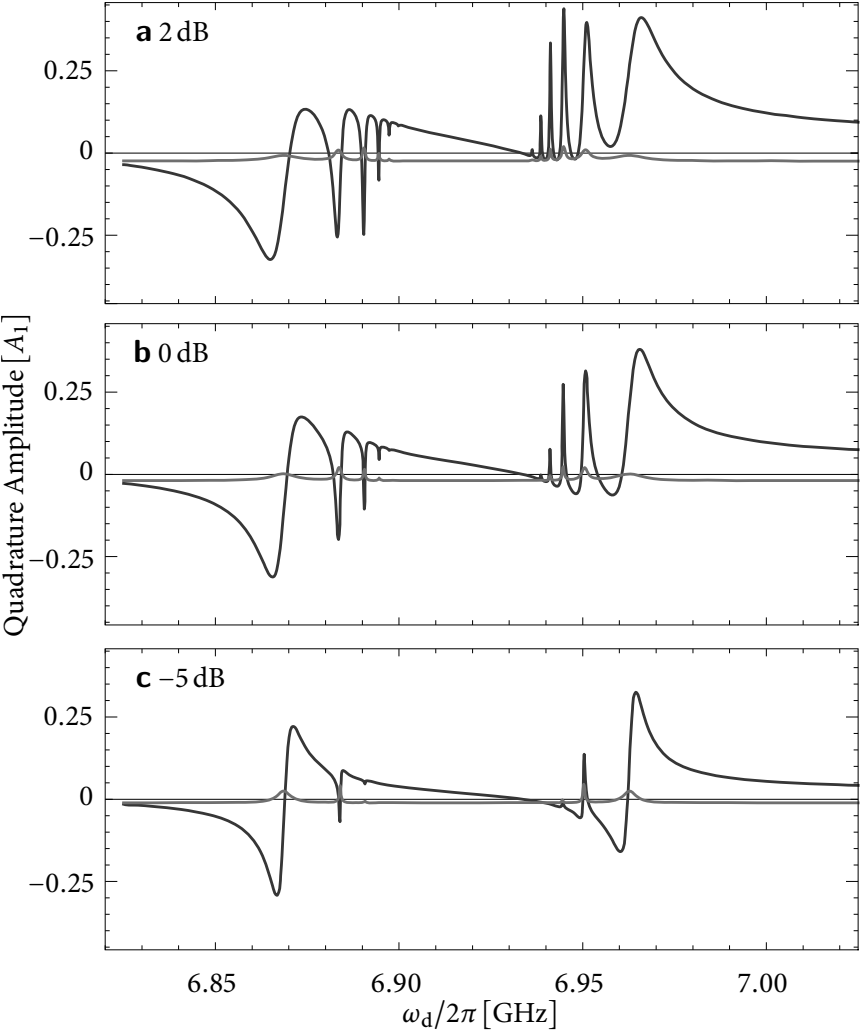


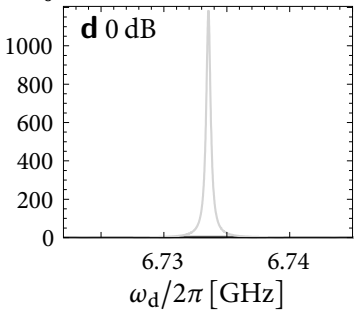
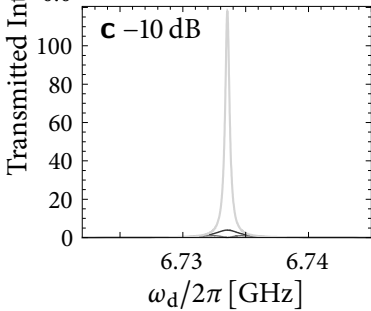
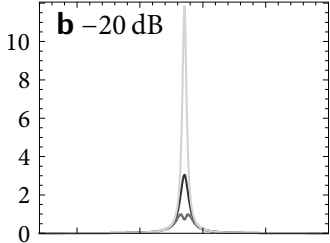
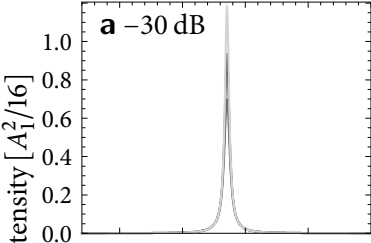


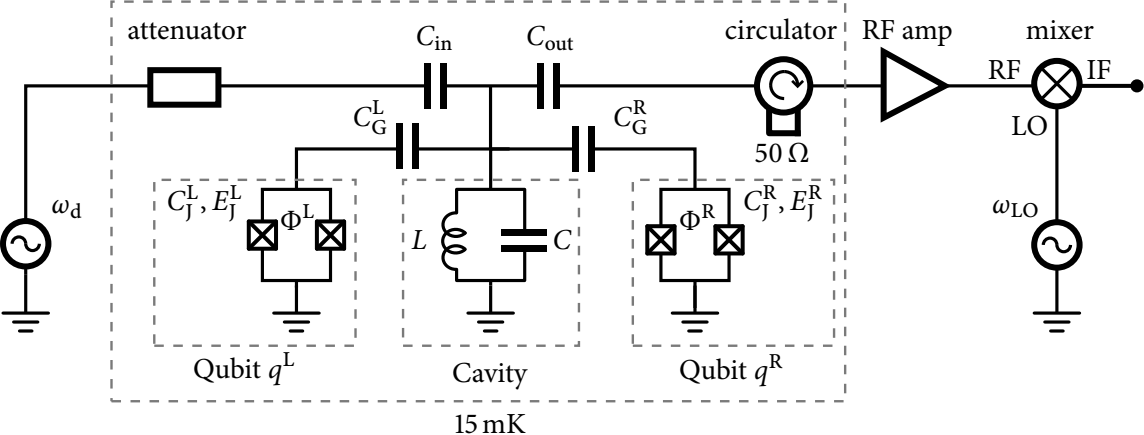


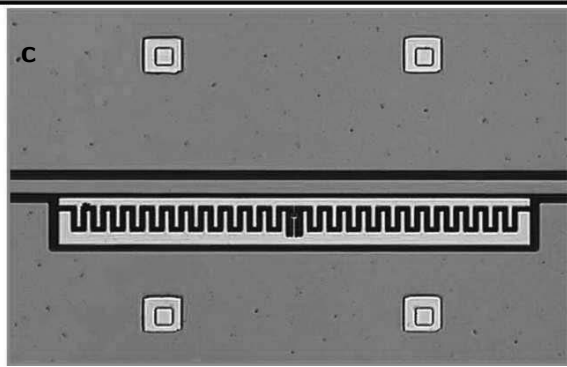
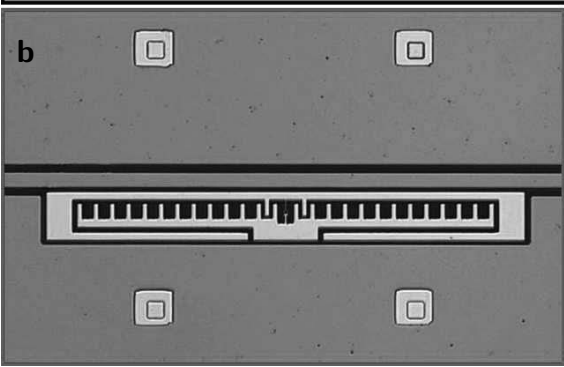
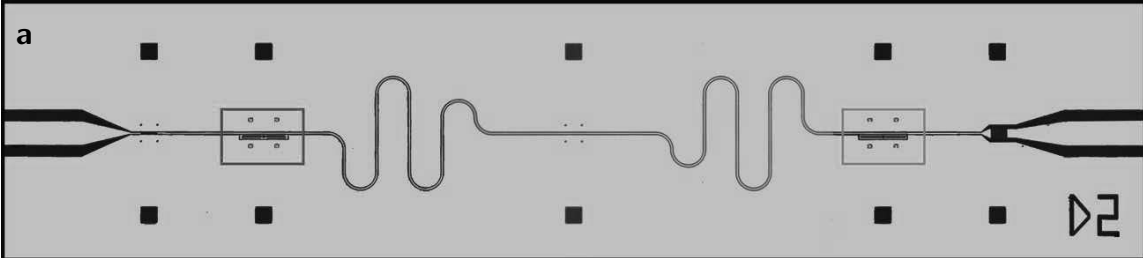


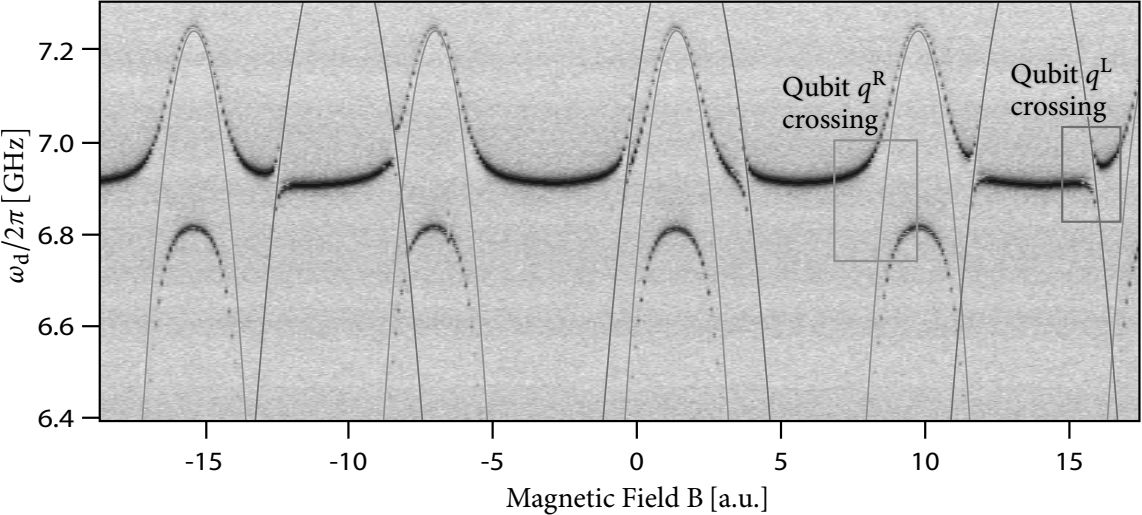


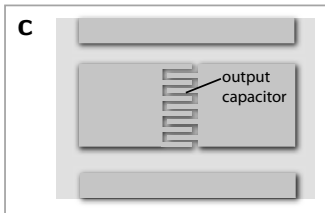
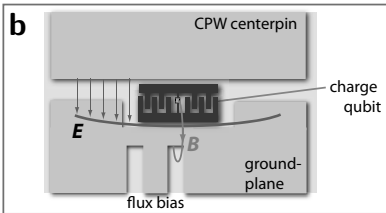
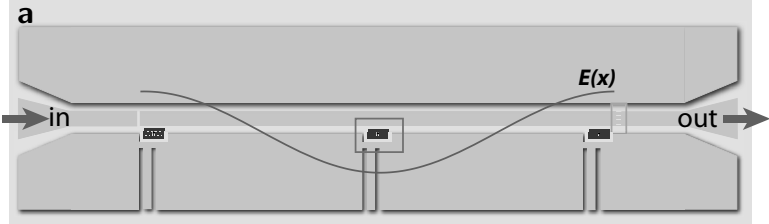


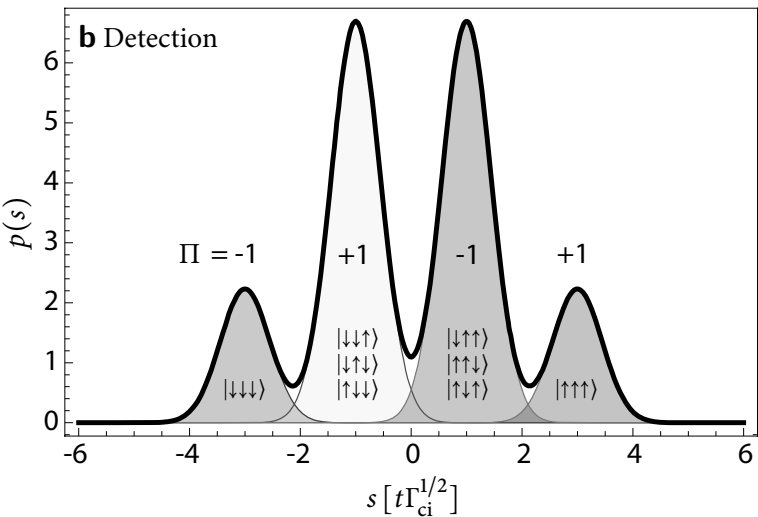
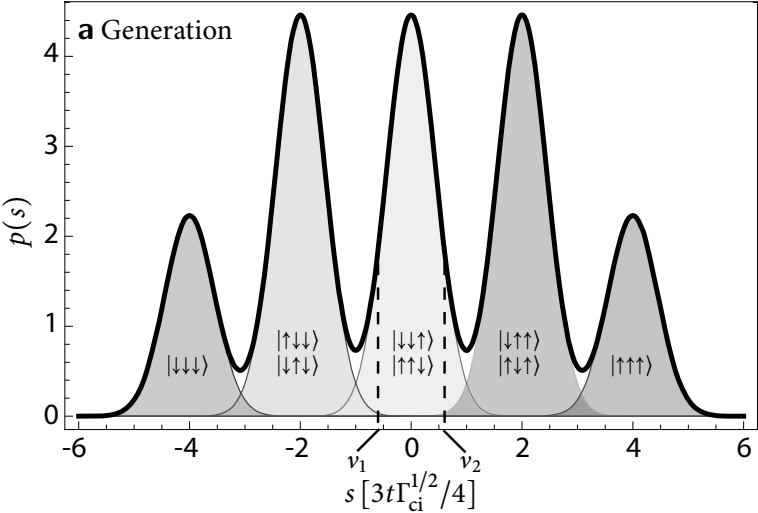


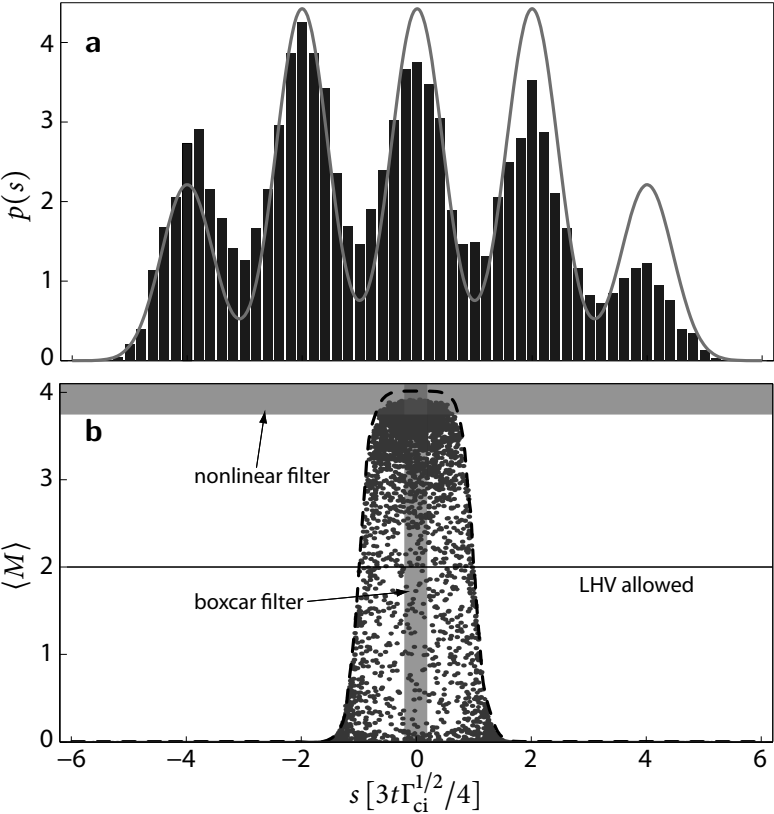


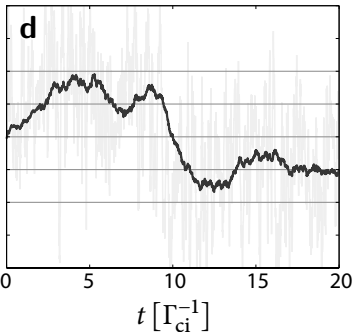
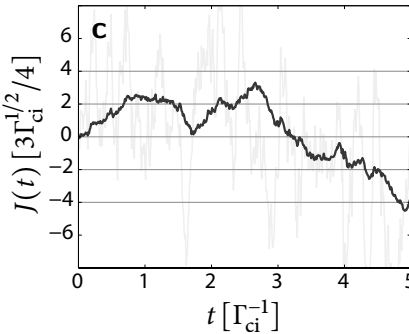
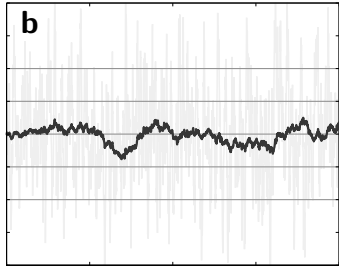
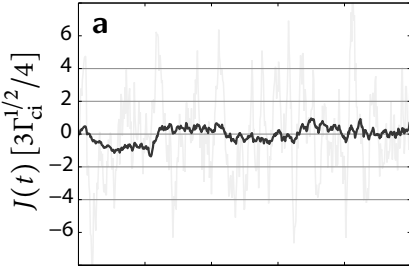


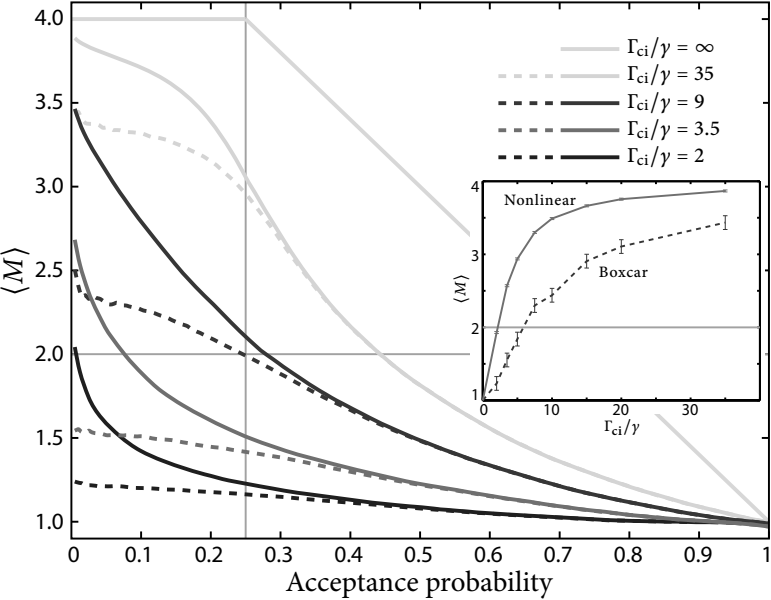


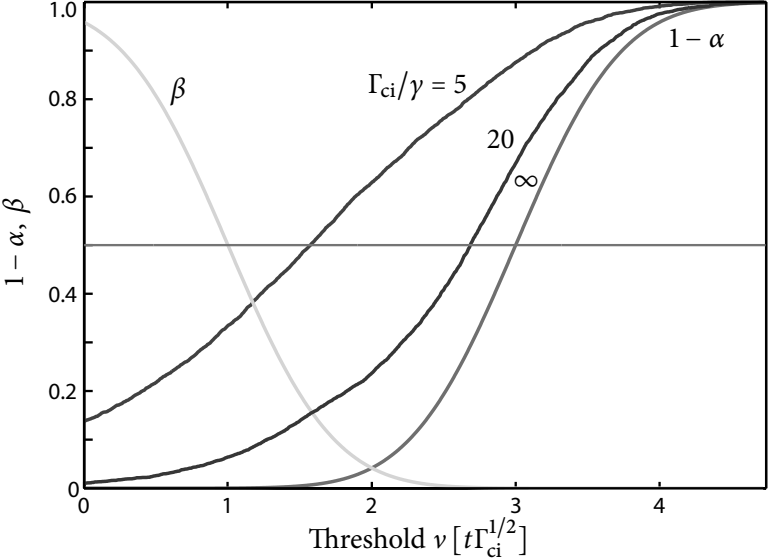


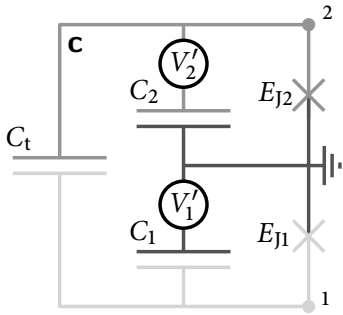
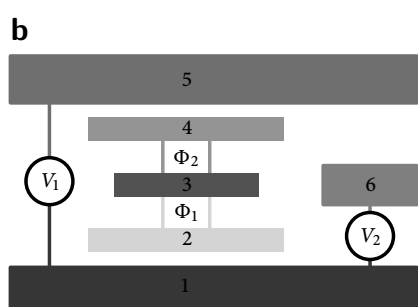
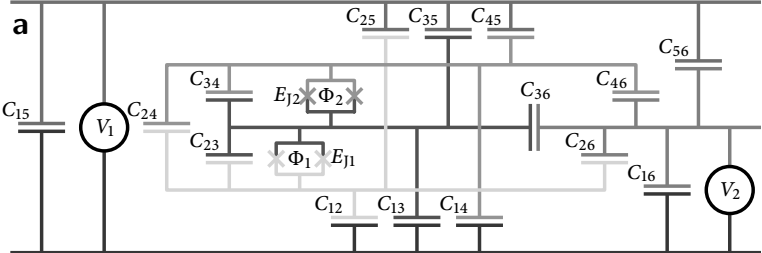


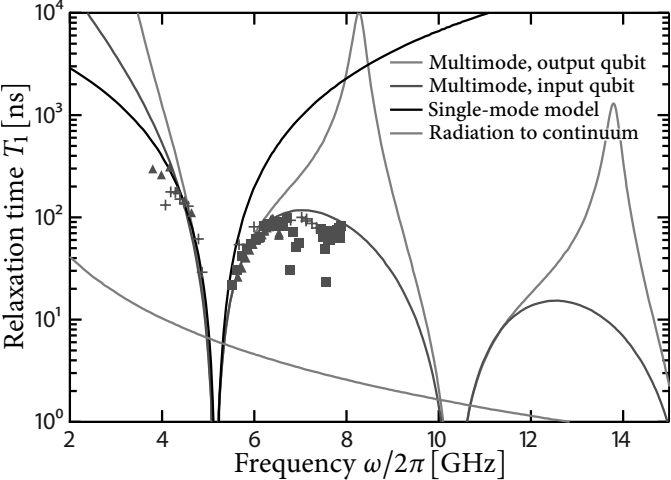




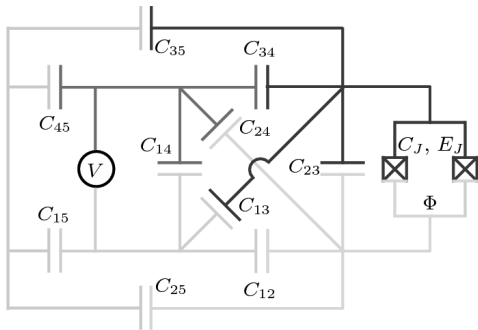




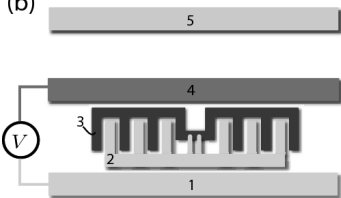




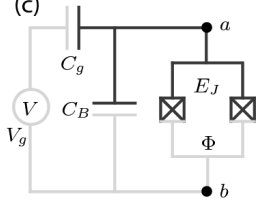
(a)

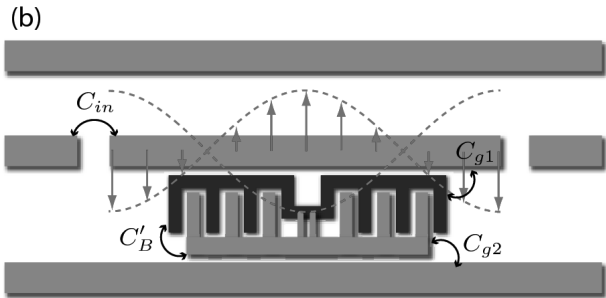
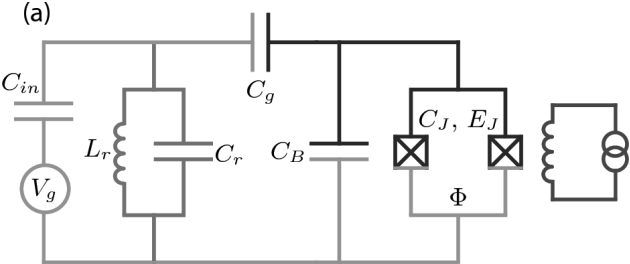


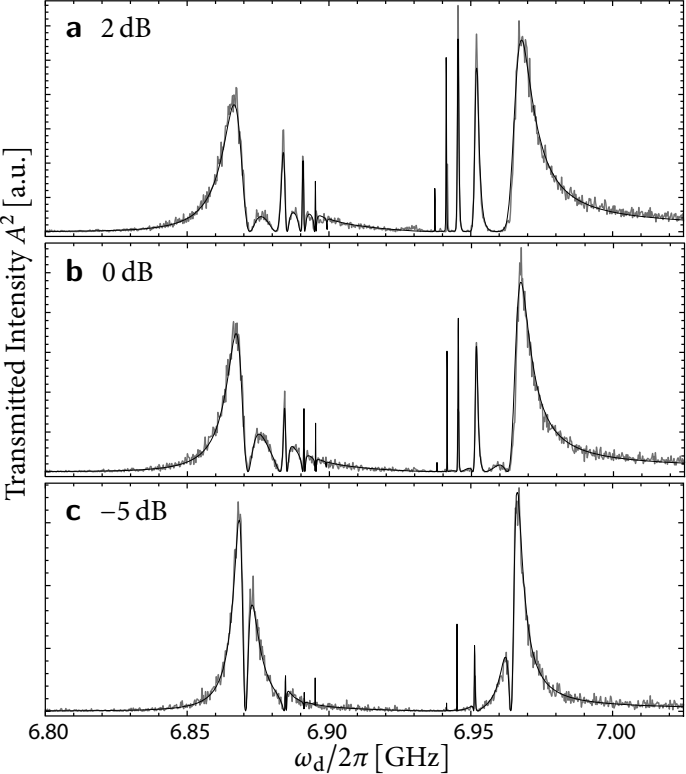
(b)

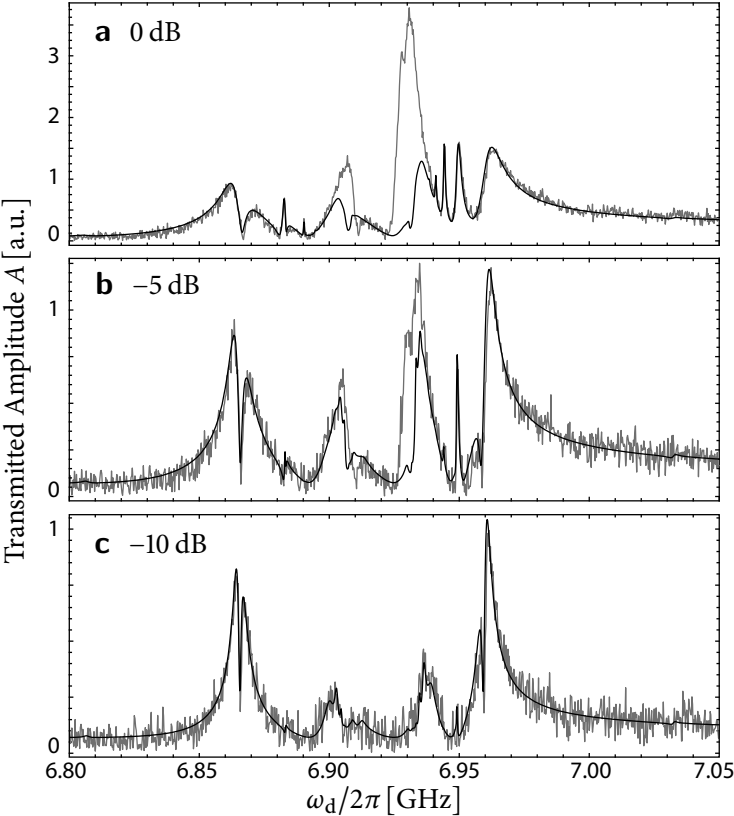


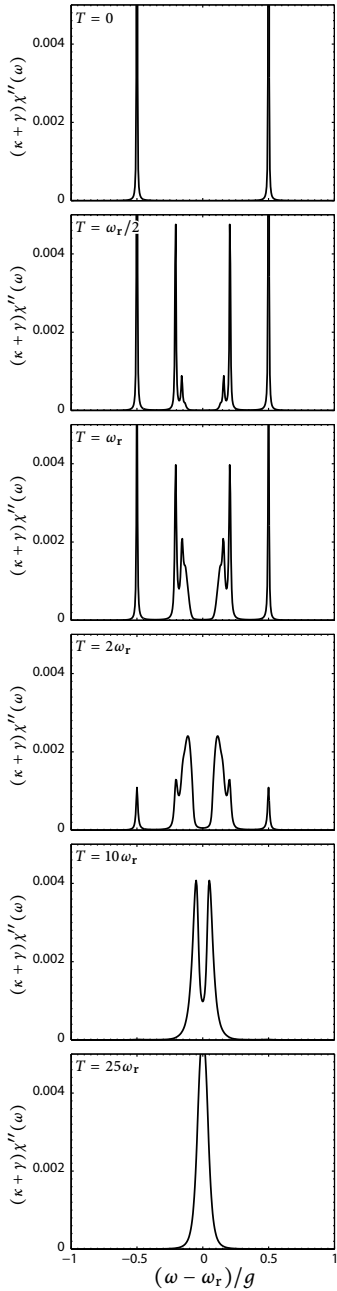
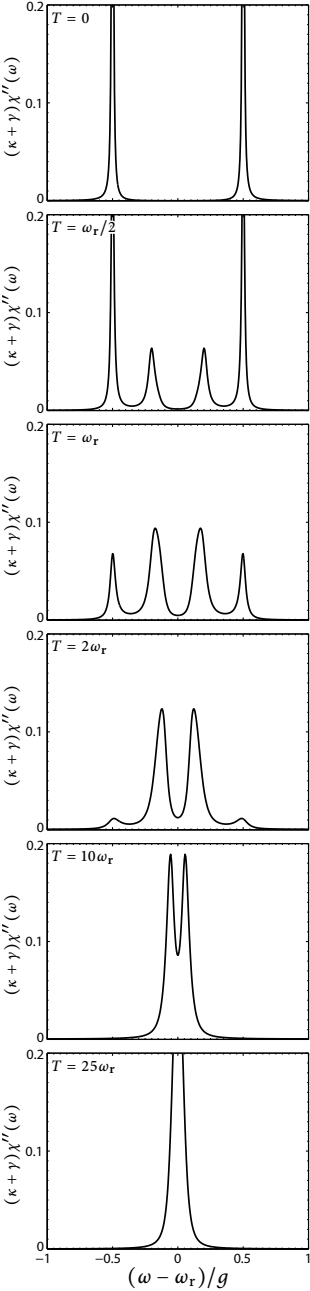
(c)



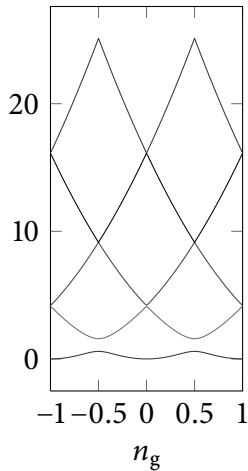




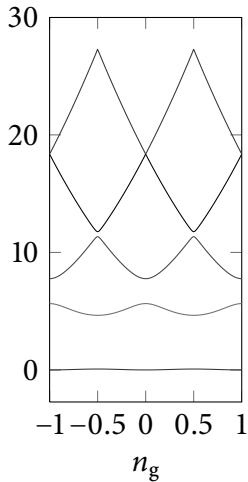




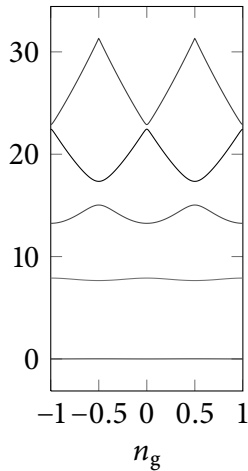
$$E_J/E_C = 1$$



$$E_J/E_C = 5$$



$$E_J/E_C = 10$$



$$E_J/E_C = 50$$

